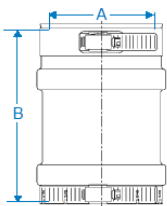
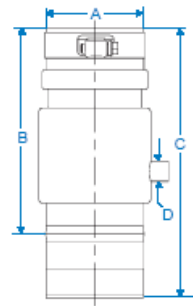


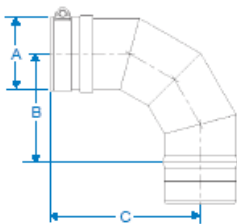
Dimensions are in inches. The following are the Pro Tech (a division of Simpson Dura-Vent) parts available through Rinnai. These parts are made of AL29-4C® stainless steel. (The air intake system consists of a field supplied 4 inch diameter stainless steel, Schedule 40 PVC, ABS or CPVC pipe. A maximum 6 feet of semi-rigid flexible aluminum ducting can also be used. Foil wrapped dryer vent and cell core products are not authorized.)



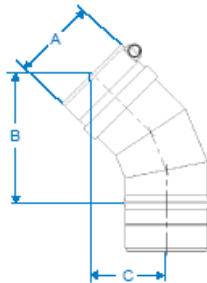
Universal Appliance Adapter		
A Vent Dia.	B Eff. Lgth	Part Number
4	5.3	FSAAU4SP



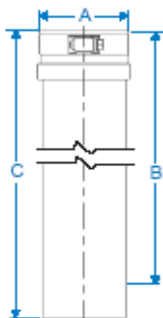
Universal Condensate Drain				
A Vent Dia.	B Eff. Lgth	C	D	Part Number
4	6.4	8.4	.63	FSUCD4SP



Elbow 90° 4"			
A Vent Dia.	B Eff. Lgth	C	Part Number
4	4.4	6.4	FSELB9004SP



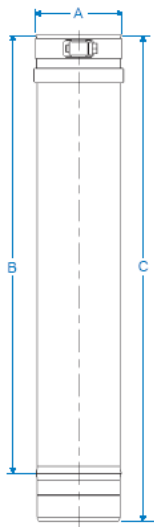
Elbow 45° 4"			
A Vent Dia.	B Eff. Lgth	C	Part Number
4	5.6	3.1	FSELB4504SP



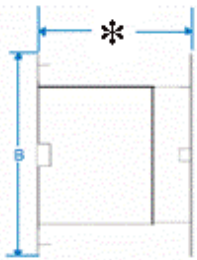
Adjustable Vent Length			
A Vent Dia.	B Eff. Lgth	C	Part Number
4	2-14	18	FSAVL4SP

All part renderings and drawings © ProTech Systems Inc.

R98/C98 (V3237) and R98LS (VA3237) Venting Illustrated Parts List

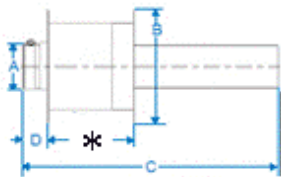


Vent Length			
A Vent Dia.	B Eff. Lgth	C	Part Number
4	10	12	FSVL1204SP
4	16	18	FSVL1804SP
4	22	24	FSVL2404SP
4	34	36	FSVL3604SP



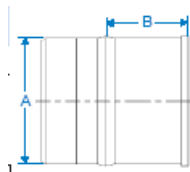
* 4.25Min 8.50Max

Wall Pass Through (for internal walls only)		
A Vent Dia.	B	Part Number
4	10.0	FSWPT4SP

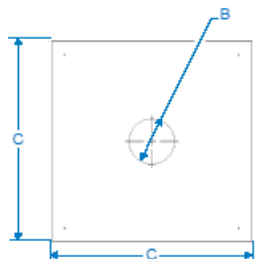


* 4.25Min 8.50Max

Wall Thimble with Adjustable Vent Length (for external termination)				
A Vent Dia.	B	C	D	Part Number
4	10.0	18.0	2.0	FSWT4SP



Bird Screen Assembly		
A Vent Dia.	B Eff. Lgth	Part Number
4	2.0	FSBS4SP



Fire Stop / Flat Flashing			
A Vent Dia.	B Diameter	C	Part Number
4	4.4	15	FSFS4SP

Variable Pitch Roof Flashing Kit

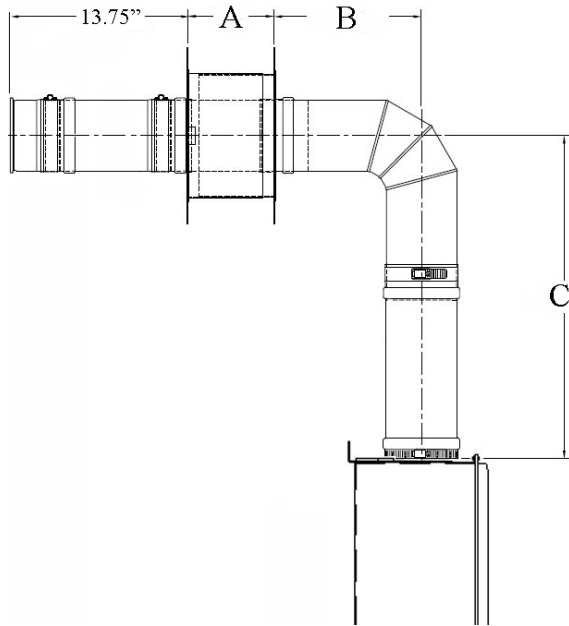
Part Number: FSVPK4



Kit Components
 Rain Cap
 Storm Collar
 Roof Jack
 Roof Flashing

		<table border="1"> <tr> <th colspan="4">Rain Cap</th> </tr> <tr> <td>A Vent Dia.</td> <td>B</td> <td>C</td> <td>D</td> </tr> <tr> <td>4</td> <td>4.5</td> <td>8.9</td> <td>1.0</td> </tr> </table>	Rain Cap				A Vent Dia.	B	C	D	4	4.5	8.9	1.0
Rain Cap														
A Vent Dia.	B	C	D											
4	4.5	8.9	1.0											
		<table border="1"> <tr> <th colspan="2">Storm Collar</th> </tr> <tr> <td>A Vent Dia.</td> <td>B</td> </tr> <tr> <td>4</td> <td>4.0</td> </tr> </table>	Storm Collar		A Vent Dia.	B	4	4.0						
Storm Collar														
A Vent Dia.	B													
4	4.0													
		<table border="1"> <tr> <th colspan="3">Roof Jack (use with Variable Pitch Roof Flashing)</th> </tr> <tr> <td>A Vent Dia.</td> <td>B</td> <td>C</td> </tr> <tr> <td>4</td> <td>5.0</td> <td>18.0</td> </tr> </table>	Roof Jack (use with Variable Pitch Roof Flashing)			A Vent Dia.	B	C	4	5.0	18.0			
Roof Jack (use with Variable Pitch Roof Flashing)														
A Vent Dia.	B	C												
4	5.0	18.0												
		<table border="1"> <tr> <th colspan="3">Variable Pitch Roof Flashing (flat - 9/12 pitch)</th> </tr> <tr> <td>A Vent Dia.</td> <td>B</td> <td>C</td> </tr> <tr> <td>4</td> <td>6.0</td> <td>7.0</td> </tr> </table>	Variable Pitch Roof Flashing (flat - 9/12 pitch)			A Vent Dia.	B	C	4	6.0	7.0			
Variable Pitch Roof Flashing (flat - 9/12 pitch)														
A Vent Dia.	B	C												
4	6.0	7.0												

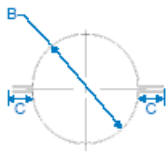
R98/C98 (V3237) and R98LS (VA3237) Venting Illustrated Parts List



Wall Mount Kit with Birdscreen Termination 4" (Rinnai 3237 Kit)			
A	B	C	Part Number
8.38 - 4.38	13.25 - 9.5	18.25-14.25	FSWMKBS4-M

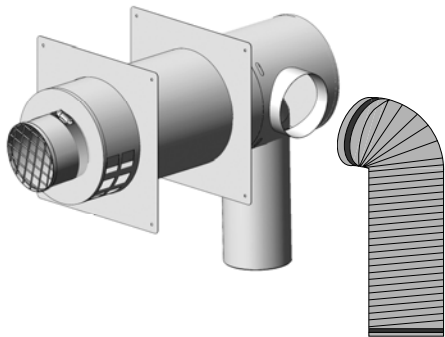
Kit Components

- Bird Screen Assembly
- Wall Thimble (8.38" - 4.38")
- Telescoping Horizontal Length (13.25" - 9.5")
- Adjustable Vertical Length (18.25" - 14.25")
- Universal Appliance Adapter
- 12" Vent Length



Support Clamp			
A Vent Dia.	B Diameter	C	Part Number
4	4.0	1.5	FSCL4

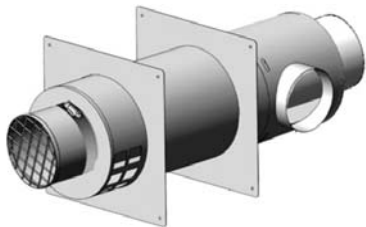
R98/C98 (V3237) and R98LS (VA3237) Venting Illustrated Parts List



Wall Mount Concentric Termination Kit for when the water heater is mounted directly on termination wall		
Vent Diameter	Fits Wall Thickness	Part Number
7.0	4.25 - 8.37 in	FSDVWMT04LH

Kit Components:

- Bird Screen
- Direct Vent Pass Through (FSDVPTB04LH)
- Appliance Adapter
- Exterior & Interior Mounting Plate
- 3-foot flexible Aluminum Duct with Two Clamps



Remote Concentric Termination for when the water heater is mounted remotely from the termination wall or penetration point		
Vent Diameter	Fits Wall Thickness	Part Number
7.0	4.25 - 8.37 in	FSDVWT4

Adjustable Horizontal Concentric Termination		
Vent Diameter	Fits Wall Thickness	Part Number
7.0	8 - 18 in	FSEDVWMT04U